

AMERICORPS OFFICE OF RESEARCH AND EVALUATION

# The Current Population Survey Civic Engagement and Volunteering Supplement Dataset

July 2023



# Overview of the Current Population Survey Civic Engagement and Volunteering supplement (CEV)

- How did the CEV come to be?
- How does the CEV take the pulse of our nation's civic health every two years?
- How does CEV data support evidence-based decision making and our understanding of civic engagement and volunteering trends across the country and over time?
- How can you access CEV data and topline findings at [data.americorps.gov](https://data.americorps.gov)?
- What's in store for the CEV moving forward?


# How does AmeriCorps define civic engagement?

**The constellation of activities individuals engage in to make a difference in their communities.**

Civic engagement includes participation within and beyond electoral politics at all geographic levels. Volunteerism is a prominent example of civic engagement, but it also includes activities like attending public meetings, belonging to organizations, and neighbors doing favors for each other.

# The Current Population Survey (CPS)

**QUICK FACT:**  
**Current Population Survey (CPS)**



The Current Population Survey (CPS) is a monthly survey of U.S. households conducted by the U.S. Census Bureau for the Bureau of Labor Statistics.

The CPS provides a wide range of information about employment, unemployment, hours of work, earnings, and people not in the labor force.


Source:  
<https://www.census.gov/programs-surveys/cps/about.html>

Image: Workforce GPS

ECONOMY | U.S. ECONOMY

## September Jobs Report Shows Payrolls Grew by 263,000, Labor Market Cooled Some

Unemployment rate edged down to 3.5%, matching a half-century low



The tight U.S. labor market continued to loosen in September.  
PHOTO: OLIVIER DOUBREY/AGENCE FRANCE PRESSE/GETTY IMAGES

By [Gabriel F. Ruiz](#) [@gfr](#)  
Updated Oct. 7, 2022 9:51 am ET

U.S. employers **added 263,000 jobs in September**, continuing a gradual cooling pattern in the labor market as **high inflation** and **rising interest rates** weighed on the economy.

Image: Wall Street Journal

**LIVE** Updated 2 hours ago


## September Jobs Report

### U.S. Job Growth Cools but Remains Solid

Here's what we know:  
A slowdown of the labor market appears to be taking hold, relieving some pressure on inflation. But hiring remains resilient and the Federal Reserve is likely to continue raising rates aggressively.

- The U.S. **added 263,000 jobs in September** as the Fed pushed to cool the economy.
- Markets fall as investors assess the state of jobs and inflation.
- Employment **grew across the economy**, but is leveling off in several sectors.
- Wages continued to climb, keeping the Fed on course.
- The labor participation rate was little changed.
- Is the labor market losing its sizzle?

### The U.S. added 263,000 jobs in September as the Fed pushed to cool the economy.



Month	Monthly change in jobs
Sept '21	+400,000
Oct '21	+600,000
Nov '21	+500,000
Dec '21	+400,000
Jan '22	+300,000
Feb '22	+500,000
March '22	+300,000
April '22	+200,000
May '22	+300,000
June '22	+400,000
July '22	+500,000
Aug '22	+600,000
Sept '22	+263,000

Data is seasonally adjusted. Source: Bureau of Labor Statistics

Image: New York Times

# Brief history of the CPS Civic Engagement and Volunteering supplement (CEV)



**2002-2015** Current Population Survey (CPS) Volunteering Supplement fielded annually

**2008-2013** CPS Civic Engagement Supplement fielded annually\*

**2014** National Academies of Science report recommends merging these surveys

**2017** Launch of biennial CPS Civic Engagement and Volunteering Supplement (CEV)

# Constructs and measures in the CEV

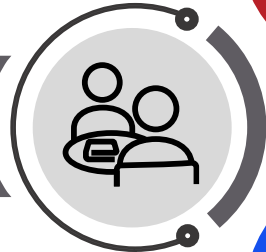
## Economic Engagement

- Values-based buying or boycotting
- Views on whether one's workplace or work contributes to the community
- Views on whether one's work is a source of pride or satisfaction



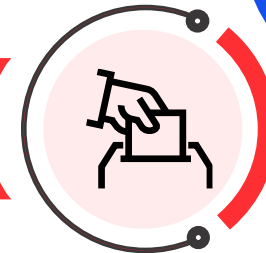
## Engaging with Neighbors

- Talking with neighbors
- Informally helping neighbors
- Discussing social issues and taking collective action with neighbors



## Political Engagement

- Voting in local elections
- Attending public meetings
- Contacting elected officials
- Donating to political campaigns or organizations



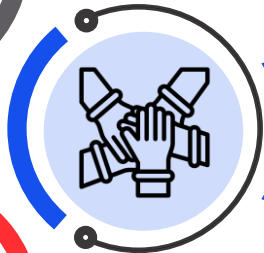
## Engaging with Friends, Family, and Social Issues

- Talking with friends and family
- Learning about social issues through the news
- Discussing social issues with friends and family
- Posting about social issues on social media



## Organizational Engagement

- Joining organizations
- Formally volunteering through organizations
- Donating to charity



**Q:** What measures are available in the CEV?

**A:** The table below summarizes all constructs that have been included in the CEV since 2017 along with the year each variable is available.

Construct	Question(s) Wording	Variable Name(s)	In 2017 CEV	In 2019 CEV	In 2021 CEV
Formal volunteering	In the past 12 months, did you spend any time volunteering for any organization or association?	PES16	Yes	Yes	Yes
	Some people don't think of activities they do infrequently or for children's schools or youth organizations as volunteer activities. In the past 12 months, have you done any of these types of activities?	PES16A			
	Recode of volunteer status based on PES16 and PES16A	PRSUPVOL			
Type(s) of organization(s) formally volunteered for	In the past 12 months, did you volunteer for a(n) [fill organization type] ... civic, political, professional, or international organization? ... educational or youth service organization? ... environmental or animal care organization? ... hospital or other health organization? ... public safety organization? ... religious organization? ... social or community service organization? ... sport, hobby, cultural, or arts organization? ... other organization?	PES16B1-9	Yes	No	No
Frequency of formal volunteering	How often did you volunteer?	PES16D	Yes	Yes	Yes



Current Population Survey  
Civic Engagement and Volunteering Supplement  
**Frequently Asked Questions**



The Current Population Survey Civic Engagement and Volunteering (CEV) Supplement is the most robust longitudinal survey about volunteerism and other forms of civic engagement in the United States. Produced in partnership with the U.S. Census Bureau, the CEV takes the pulse of our nation's civic health every two years. The data can support evidence-based decision making and efforts to understand how people make a difference in communities across the country.

Please click on the frequently asked questions below for additional information about the CEV.

[What is the Current Population Survey?](#)

[What is the Current Population Survey Civic Engagement and Volunteering \(CEV\) Supplement?](#)

[What is the relationship between the CEV, Volunteering, and Civic Engagement Supplements?](#)

[Where can I find basic statistics like the national formal volunteering rate and number of Americans who volunteer through an organization?](#)

[What measures are available in the CEV?](#)

[Where can I find full documentation for the CEV?](#)

[Where can I access CEV data?](#)

[How do I convert ASCII files from the Census website into a form my statistical program will recognize?](#)

[Which weight\(s\) should I use with CEV data?](#)

[What is the smallest geographic unit I can analyze in the CEV?](#)

[Who can I contact with questions?](#)



**Q: Which weight(s) should I use with CEV data?**

**A:** Although weighting procedures vary with the research question, CEV users should always apply the appropriate supplement-specific weight to account for the random selection of individual respondents and missing data due to nonresponse.

- Use the nonresponse supplement weight (*PWNRWGT* in the Census documentation; *supwgt* in the AmeriCorps analytical dataset and codebook) for CEV variables that allow for proxy respondents: *pes1* through *pes18* and *peswp2*
- Use the self-response supplement weight (*PWSRWGT* in the Census documentation; *ssupwgt* in the AmeriCorps analytical dataset and codebook) for CEV variables asked only of self-respondents: *peswp1a* through *peswp1d*

For details, see [https://cps.ipums.org/cps/sample\\_weights.shtml](https://cps.ipums.org/cps/sample_weights.shtml).

**Q:** What is the smallest geographic unit I can analyze in the CEV?

**A:** Current Population Survey sampling and weighting procedures are designed for estimates to be reliable at the national and state levels. The Current Population Survey also produces fairly reliable estimates for the top 12 Metropolitan Statistical Areas (MSAs) where the sample size is sufficient to minimize nonresponse bias. CEV estimates at smaller geographic units (county, city, census tract, etc.) do not meet Census' technical definition of reliability, which means that the CEV is best suited for analysis at the national level, within states, and in the top 12 MSA level. For details, see <https://www.bls.gov/lau/notescps.htm#:~:text=The%20CPS%20sample%20is%20designed%20to%20support%20reliable,tabulated%20from%20the%20CPS%20as%20the%20primary%20inputs.>

The largest 12 metropolitan statistical areas (MSAs) in 2021 were: New York, Los Angeles, Chicago, Dallas, Houston, Washington DC, Philadelphia, Atlanta, Miami, Phoenix, Boston, and the Bay Area (CA)

# Volunteering in America

In 2021, more than **60.7 million** Americans volunteered through an organization contributing **\$122.9 billion** in economic value.

More than **124.7 million** Americans helped their neighbors in the height of the pandemic.



# AmeriCorps CEO Michael Smith on our Volunteering and Civic Life in America research

**FOX10 NEWS**

News Watch Live Weather Tropics Sports Our Apps Studio 10

ADVERTISEMENT

## Volunteering trends in the U.S. with AmeriCorps

And How You Can Get Involved



**VOLUNTEERING TRENDS** STUDIO 10

By Jennifer Lambers  
Published: Jan. 25, 2023 at 10:16 AM CST

[f](#) [m](#) [t](#) [p](#) [in](#)

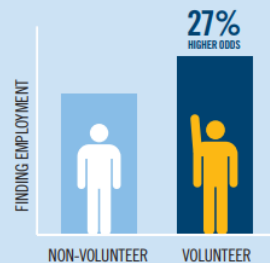
# AmeriCorps.gov/evidence-exchange

## VOLUNTEERING: A PATHWAY TO EMPLOYMENT

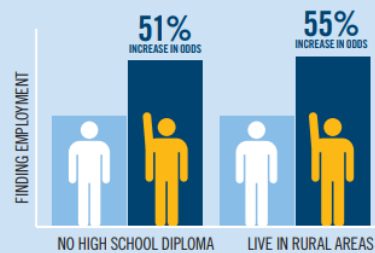
The new report from the Corporation for National and Community Service provides the most compelling empirical evidence to date linking volunteering and employment in the United States.



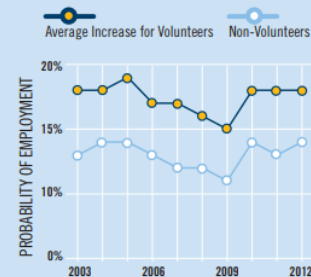
Volunteers have higher odds of finding employment in today's job market.



Volunteers have a 27% higher odds of finding employment than non-volunteers.



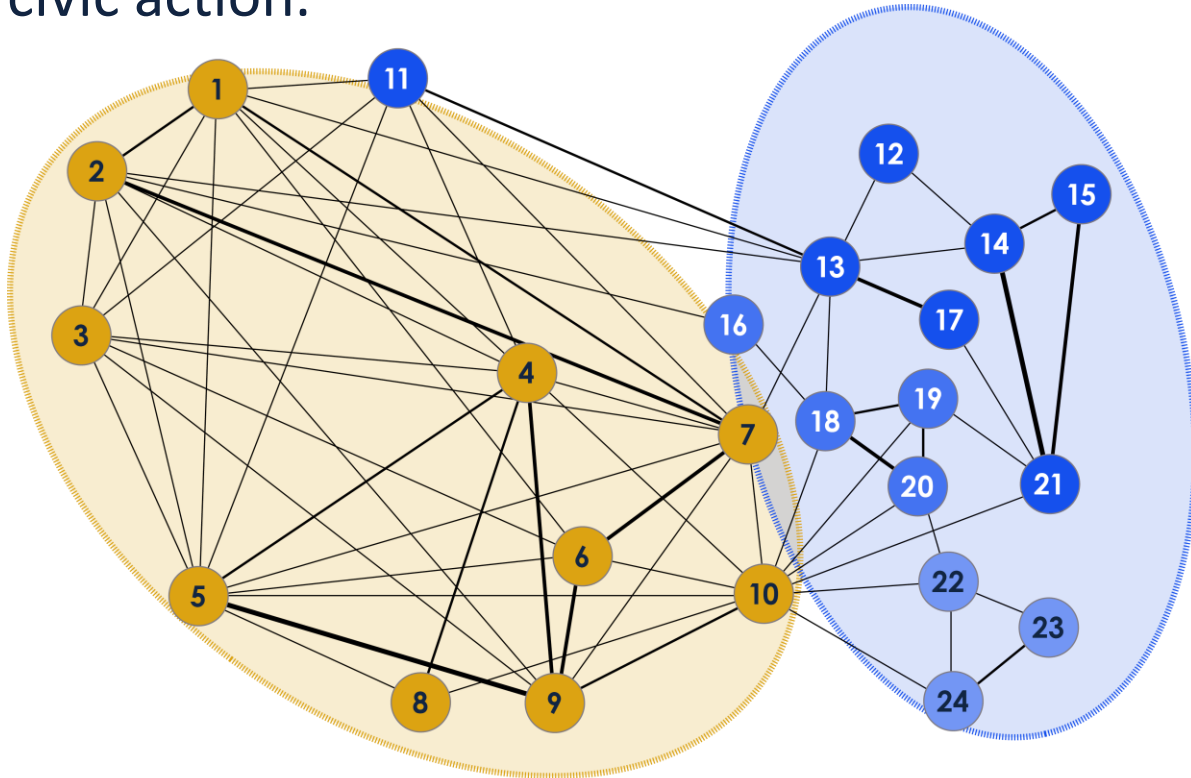
The relationship between volunteering and employment was strongest for individuals without a high school diploma and those who live in rural areas.



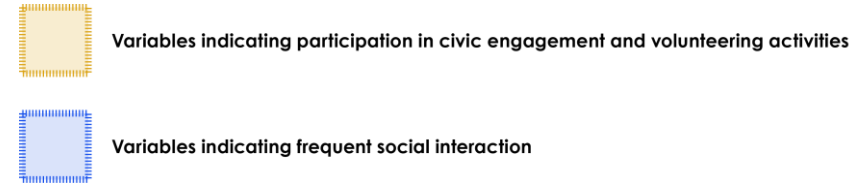
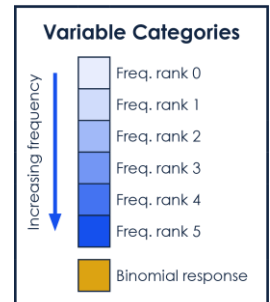
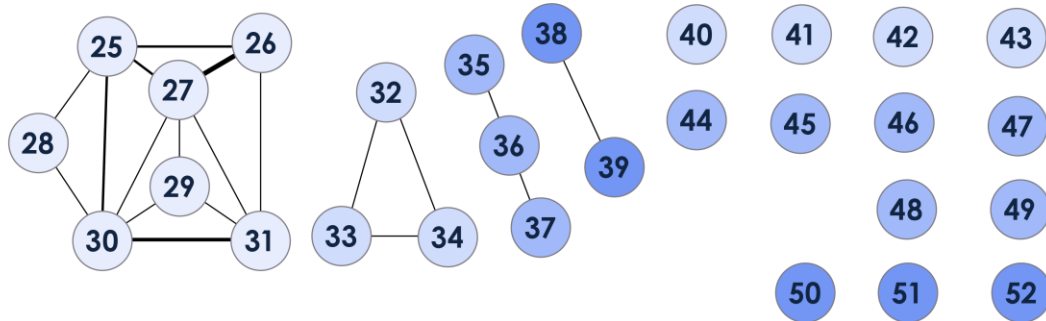
The relationship is stable across time and economic conditions.

# MARKOV NETWORK MODELING

Markov networks show strong relationships between frequent social interaction and civic action.



1	Donating to a political cause	27	Talking with neighbors
2	Boycotting or boycotting	28	Posting views online
3	Voting in local elections	29	Talking with friends and family
4	Charitable giving	30	Discussing issues with friends and family
5	Organizational membership	31	Learning about issues
6	Attending public meetings	32	Informally helping neighbors
7	Contacting public officials	33	Discussing issues with neighbors
8	Employer promotes volunteering	34	Talking with neighbors
9	Formal volunteering	35	Informally helping neighbors
10	Taking action with neighbors	36	Discussing issues with neighbors
11	Learning about issues	37	Talking with neighbors
12	Posting views online	38	Talking with friends and family
13	Discussing issues with friends and family	39	Discussing issues with friends and family
14	Discussing issues with neighbors	40	Discussing issues with friends and family
15	Informally helping neighbors	41	Talking with friends and family
16	Discussing issues with friends and family	42	Learning about issues
17	Talking with friends and family	43	Posting views online
18	Discussing issues with neighbors	44	Discussing issues with friends and family
19	Informally helping neighbors	45	Talking with friends and family
20	Talking with neighbors	46	Learning about issues
21	Talking with neighbors	47	Posting views online
22	Informally helping neighbors	48	Learning about issues
23	Talking with neighbors	49	Posting views online
24	Discussing issues with neighbors	50	Talking with friends and family
25	Discussing issues with neighbors	51	Learning about issues
26	Informally helping neighbors	52	Posting views online



# data.americorps.gov

The screenshot shows the homepage of data.americorps.gov. At the top left is the AmeriCorps logo. To its right is a search bar. Below the logo are navigation links for 'Home Page', 'Catalog', and 'Tutorial'. On the right side of the top navigation bar are social media icons for Facebook, Twitter, and Instagram, along with a 'Sign In' button. The main content area features a large background image of hands stacked together. Overlaid on this image is a white box with the heading 'Welcome to AmeriCorps Open Data' and a paragraph of introductory text. Below this are three blue buttons: 'Data Catalog' (with a hamburger menu icon), 'Maps' (with a map icon), and 'Charts and Graphs' (with a bar chart icon). Underneath these are three white boxes with images and text: 'Help with Open Data' (with a red 'Help' button icon), 'Civic Engagement and Volunteering (CEV) Supplement' (with an image of two people), and 'Research and Evaluation' (with a 'RESEARCH' keyboard key icon). The footer contains navigation links, the URL 'americorps.gov', a copyright notice '© 2023 AmeriCorps', social media icons, and the 'EMPOWERED BY TYLER TECHNOLOGIES' logo.

**AmeriCorps**

Home Page Catalog Tutorial

Search

Facebook Twitter Instagram Sign In

## Welcome to AmeriCorps Open Data

AmeriCorps, the federal agency, brings people together to tackle the country's most pressing challenges through national service and volunteering. AmeriCorps members and AmeriCorps Seniors volunteers serve with organizations dedicated to the improvement of communities. AmeriCorps helps make service to others a cornerstone of our national culture. Learn more about AmeriCorps.gov. Explore this site to view data that shows how AmeriCorps brings out the best of America.

**Data Catalog**

**Maps**

**Charts and Graphs**

**Help with Open Data**  
Access quick training videos for how to use this tool. You can also email [opendata@cns.gov](mailto:opendata@cns.gov) with any questions.

**Civic Engagement and Volunteering (CEV) Supplement**  
AmeriCorps, in partnership with the U.S. Census Bureau, takes the pulse of our nation's civic health every two years.

**Research and Evaluation**  
Go to the Office of Research and Evaluation pages to access reports and resources.

Home Page Catalog [americorps.gov](https://americorps.gov) Contact Us Privacy Policy © 2023 AmeriCorps

Facebook Twitter Instagram

EMPOWERED BY TYLER TECHNOLOGIES

# THANK YOU

To subscribe to the AmeriCorps Office of Research and Evaluation newsletter, please go to

<https://americorps.gov/about/our-impact>

For questions about the CEV, please contact

[AmeriCorpsCEV@cns.gov](mailto:AmeriCorpsCEV@cns.gov)



# Additional resources mentioned in the presentation

- **AmeriCorps Open Data** <https://data.americorps.gov/>
- **AmeriCorps Volunteering and Civic Life in America research** <https://americorps.gov/about/our-impact/volunteering-civic-life>
- **AmeriCorps Office of Research and Evaluation Research Grants program** <https://www.americorps.gov/grantees-sponsors/research-evaluation/grantee-profiles>
- **2014 National Academies of Sciences report** <https://nap.nationalacademies.org/catalog/18831/civic-engagement-and-social-cohesion-measuring-dimensions-of-social-capital>
- **2023 U.S. Census Bureau “America Counts” story featuring the 2021 CEV** <https://www.census.gov/library/stories/2023/01/volunteering-and-civic-life-in-america.html#:~:text=Nearly%2051%25%20of%20the%20U.S.,in%20America%20rese arch%20released%20today>
- **2023 interview with AmeriCorps CEO Michael Smith on Mobile, AL Fox10 News** <https://www.fox10tv.com/2023/01/25/volunteering-trends-us-with-americorps/>
- **2014 AmeriCorps Employment Study** <https://americorps.gov/evidence-exchange/Volunteering-as-a-Pathway-to-Employment%3A-Does-Volunteering-Increase-Odds-of-Finding-a-Job-for-the-Out-of-Work%3F>