

EVIDENCE SNAPSHOT

Scaling Evidence-Based Models

Office of Research and Evaluation | [Americorps.gov](https://americorps.gov)

Scaling Evidence-Based Models (SEBM)

AmeriCorps' emphasis on evidence is meant to support innovation, improvement, and learning. Our agency's intent is to integrate the use of evidence and opportunities for further learning into all activities. Where an evidence base is lacking, our goal is for evidence to be developed through systematic analysis. Where evidence of positive impact exists, it will be used to encourage replication, expansion and adaptation of effective national service models to reach more people in underserved communities.

Scaling Approaches

Expansion: Extends the intervention to more people in the same target population in the same location

Replication: Extends the intervention to the same target population in a different location

Adaptation: Extends the intervention to a different target population in either the same or different location or modifies the intervention for the same population in either the same or different location

With a focus on the use and expansion of effective solutions, AmeriCorps' Office of Research and Evaluation initiated a multi-year research project called Scaling Evidence-Based Models (SEBM) to:

- Discover the AmeriCorps-funded program models with the strongest base of evidence,
- Illuminate the processes that grantees use to scale an evidence-based intervention, and
- Develop recommendations that support the scale up and replication of models and interventions that work. This Evaluation project not only researched, but translated that work into applied assistance guides, checklists and an interactive virtual SCALER Tool for AmeriCorps staff, grantees, sponsors, State Service Commissions and other community based organizations.

The SCALER Tool (<https://americorps.gov/grantees-sponsors/evaluation-resources/scaler>) is an interactive learning resource that utilizes technology to provide state of the field guidance that helps not only our AmeriCorps awarded sponsors and grantees, but all community based organizations

AmeriCorps, a federal agency, brings people together to tackle the country's most pressing challenges, through national service and volunteering. AmeriCorps members and AmeriCorps Seniors volunteers serve with organizations dedicated to the improvement of communities. AmeriCorps helps make service to others a cornerstone of our national culture. Learn more at [AmeriCorps.gov](https://americorps.gov).



(CBOs) and practitioners in understanding their readiness to scale their program models and ultimately increase their impact in local communities.

Using the SCALER Tool, a CBO can examine the existing evidence for their program's effectiveness, self-assess their evaluation capacity to build such evidence if it is needed, and determine if they have the procedures and processes in place to prepare their program model for potential scaling and replication. Funders such as State Service Commissions, other federal, state, and local government agencies and Philanthropic grantmaking organizations can also utilize this tool to guide and support their grantees to prepare them for successful scaling of interventions that work.

When working with the SCALER Tool, an organization can self-assess eight elements researched and identified as contributing to the readiness for scaling an evidence-based intervention and the program. Through interactive checklists as well as a provided discussion worksheet, staff can individually complete the information and then come together to discuss and develop operational, programmatic or strategic plans. The eight checklist elements included in the report and the SCALER Tool include:

- Identifying an effective intervention
- Building evidence of effectiveness
- Specifying the intervention
- Defining the target population
- Establishing implementation supports
- Having an enabling context
- Establishing an implementation infrastructure
- Summary of scaling readiness

“Scaling an Intervention: Recommendations and Resources” is the overarching resource for this suite of research, guides and products, and disseminates the knowledge gained from the SEBM project to include five key recommendations that will help funders like AmeriCorps, other government agencies, and philanthropic organizations identify which funded interventions are effective, enhance their knowledge base on scaling them, and pursue scaling.

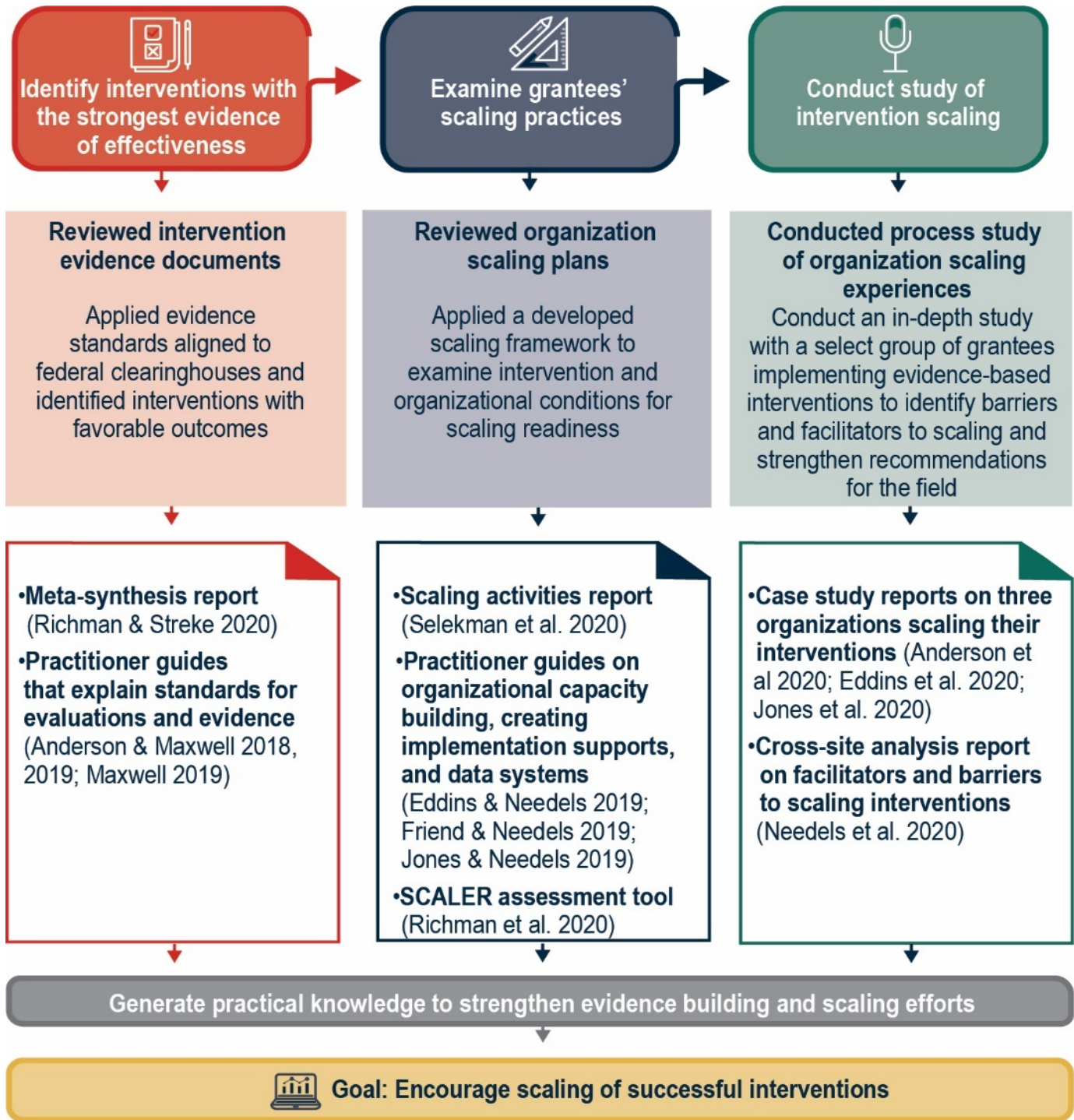
How the Findings Will Inform AmeriCorps

For decades, AmeriCorps has worked to make service to others an indispensable part of the American experience. One of the agency's strategic goals is a more equitable AmeriCorps where opportunity and access to resources stimulates future individual and community well-being. Investing in awards that are evidence-informed is only part of the service and grantmaking equation; understanding the evidence behind what works and then scaling and replicating it to benefit the citizens of more communities and for more service opportunities is the next step. The SEBM project, the findings, the tools and the additional resources will be developed into a “Replicating What Works” scaling/replication technical assistance grantmaking strategy informed by evidence. The approach will develop curriculum, one-on-one assistance, and utilize the interactive SCALER Tool, to increase learning and applied understanding of scaling readiness and scaling success to achieve the Agency goal of equity.

For more information, please contact evaluation@cns.gov



The Scaling Evidence-Based Models Initiative Phases, Activities and Knowledge Products



For more information, please contact evaluation@cns.gov



Resources in the Scaling Evidence-Based Models Suite

Identify interventions with the strongest evidence of effectiveness

Name of Guide/Tool/Report	URL
Evidence of Effectiveness in AmeriCorps-Funded Organizations	https://americorps.gov/evidence-exchange/scaling-programs-research-evidence-effectiveness
Baseline Equivalence: What it is and Why it is Needed	https://americorps.gov/evidence-exchange/baseline-equivalence-what-it-why-it-needed
How to Fully Describe an Intervention	https://americorps.gov/evidence-exchange/how-fully-describe-intervention
What Makes for a Well-Designed, Well-Implemented Impact Study	https://americorps.gov/evidence-exchange/what-makes-well-designed-well-implemented-study

Examine grantees' scaling practices

Name of Guide/Tool/Report	URL
Planned Scaling Activities of AmeriCorps-Funded Organizations	https://americorps.gov/evidence-exchange/planned-scaling-activities-ameri-corps-funded-organizations
Making the Most of Data	https://americorps.gov/evidence-exchange/making-most-data
How to Structure Implementation Supports	https://americorps.gov/evidence-exchange/how-structure-implementation-supports
Build Organizational Capacity to Implement an Intervention	https://americorps.gov/evidence-exchange/build-organizational-capacity-implement-intervention
Scaling Checklists: Assessing Your Level of Evidence and Readiness (SCALER)	https://americorps.gov/evidence-exchange/scaling-checklists-assessing-your-level-evidence-readiness-scaler
Scaling an Intervention: Recommendations and Resources	https://americorps.gov/sites/default/files/document/AmeriCorps_ScalingRecsAndResources_09Apr2021.pdf
Scaling Checklists: Assessing Your Level of Evidence and Readiness (SCALER) Tool	https://americorps.gov/grantees-sponsors/evaluation-resources/scaler
Scaling Evidence-Based Models: Document Review Rubrics	Forthcoming Publication

Conduct study of intervention scaling

Name of Guide/Tool/Report	URL
Scaling Evidence-Based Interventions: Insights from the Experiences of Three Grantees	https://americorps.gov/evidence-exchange/Scaling-Evidence-Based-Interventions:-Insights-from-the-Experiences-of-Three-Grantees
Scaling the Home Instruction for Parents of Preschool Youngsters (HIPPI) Intervention: Insights from the Experiences of Parent Possible	https://americorps.gov/evidence-exchange/Scaling-the-Home-Instruction-for-Parents-of-Preschool-Youngsters-%28HIPPI%29-Intervention%3A-Insights-from-the-Experiences-of-Parent-Possible
Scaling the Reading Corps Intervention: Insights from the Experiences of the United Way of Iowa	https://americorps.gov/evidence-exchange/Scaling-the-Reading-Corps-Intervention%3A-Insights-from-the-Experiences-of-the-United-Way-of-Iowa
Scaling the Birth and Beyond (B&B) Intervention: Insights from the Experiences of the Child Abuse Prevention Council (CAPC)	https://americorps.gov/evidence-exchange/Scaling-the-Birth-and-Beyond-%28B%26B%29-Intervention%3A-Insights-from-the-Experiences-of-the-Child-Abuse-Prevention-Council-%28CAPC%29

For more information, please contact evaluation@cns.gov